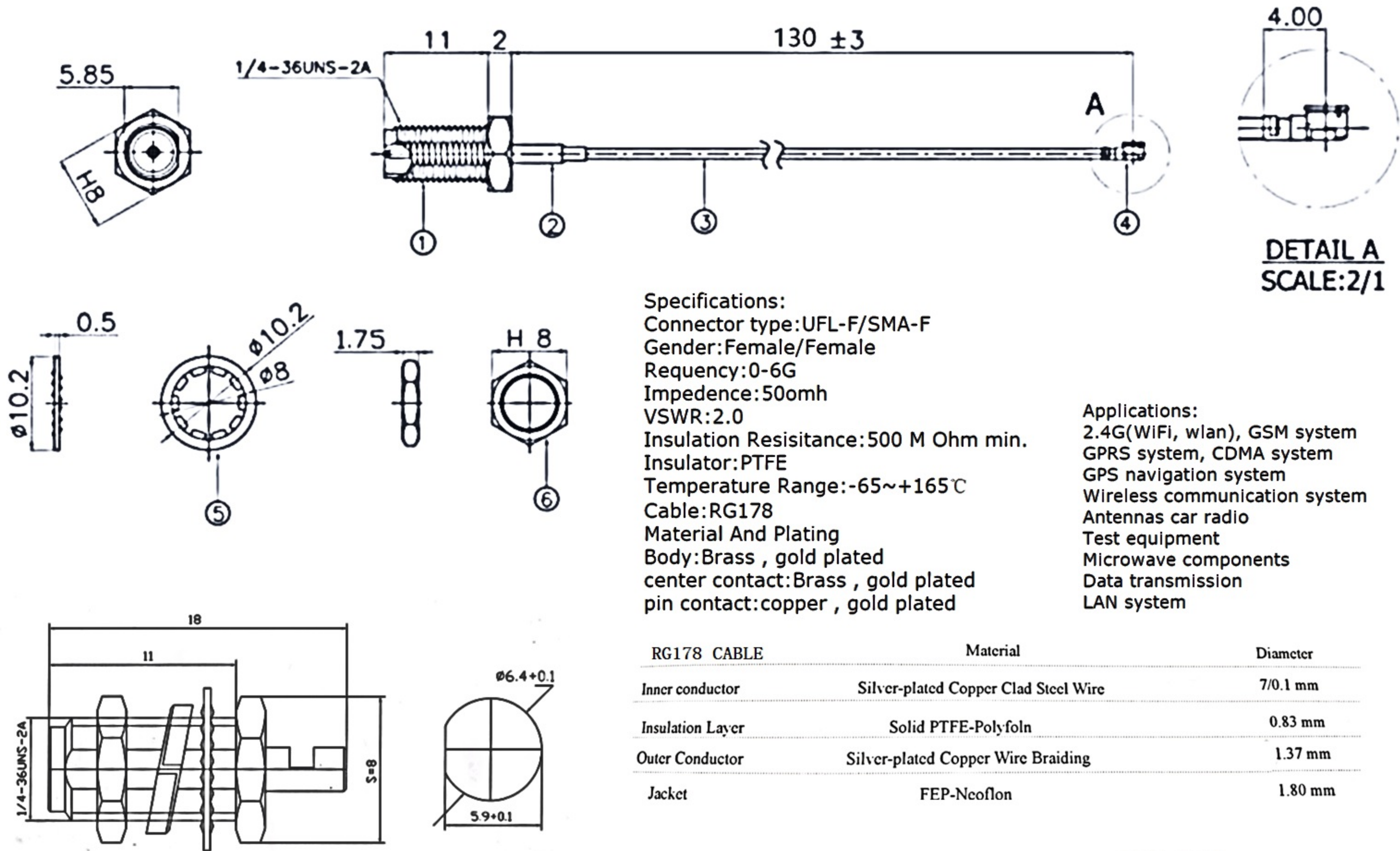


ITEM: UFL-F/SMA-F JV-003+O 13CM



DETAIL A
SCALE:2/1

Specifications:
 Connector type:UFL-F/SMA-F
 Gender:Female/Female
 Requency:0-6G
 Impedence:50omh
 VSWR:2.0
 Insulation Resisitance:500 M Ohm min.
 Insulator:PTFE
 Temperature Range:-65~+165℃
 Cable:RG178
Material And Plating
 Body:Brass , gold plated
 center contact:Brass , gold plated
 pin contact:copper , gold plated

Applications:
 2.4G(WiFi, wlan), GSM system
 GPRS system, CDMA system
 GPS navigation system
 Wireless communication system
 Antennas car radio
 Test equipment
 Microwave components
 Data transmission
 LAN system

RG178 CABLE	Material	Diameter
Inner conductor	Silver-plated Copper Clad Steel Wire	7/0.1 mm
Insulation Layer	Solid PTFE-Polyfoln	0.83 mm
Outer Conductor	Silver-plated Copper Wire Braiding	1.37 mm
Jacket	FEP-Neoflon	1.80 mm

RUI CHI